

› INCORPORATING RODA

# ANDAX-JUMBO

Automatic Partition Assembler  
(large formats in corrugated board)



  
**SOLEMA**

## LONGITUDINAL ELEMENTS PROCESSING



Longitudinal elements are to be fed vertically onto preparation device located above main transporting channels. Standard machine is endowed with 9 guiding channels. Feeding operation of channels can be done by hand or by a supplementary device mod.

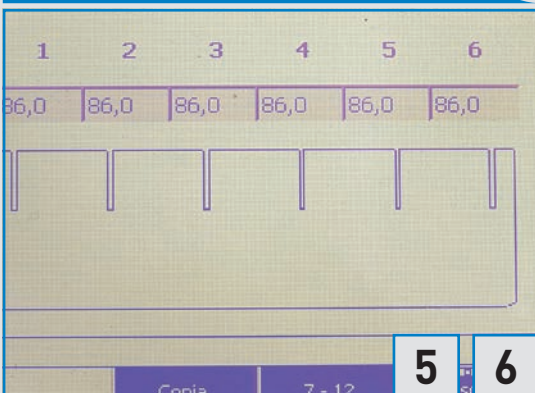
ASF

## AUTOMATIC SHEET FEEDER - ASF (optional)



To load longitudinal elements into guiding channel, machine can be endowed with automatic pre-feeder to maximize the machine productivity. Elements are kept upright by a pressure system and moved to injection area by means of belts.

## TOUCH SCREEN / ELECTRICAL CABINET



Machine is controlled and operated from touch screen panel installed on electrical cabinet. From this HMI, operators process and save data related to the different partitions like: number of cuts in longitudinal element, motors speed, injection timing, etc

**ANDAX-JUMBO** is a very robust and versatile machine designed for the automatic assembly of large size of corrugated board partitions.

It can handle all types of corrugated board, from micro-flute to double wall including microwave and twin dual, with maximum consistency and productivity.

The machine is manufactured from **SOLEMA** and integrate the best of the 70 years **RODA** technology and expertise in the construction of highly reliable assembly machines.

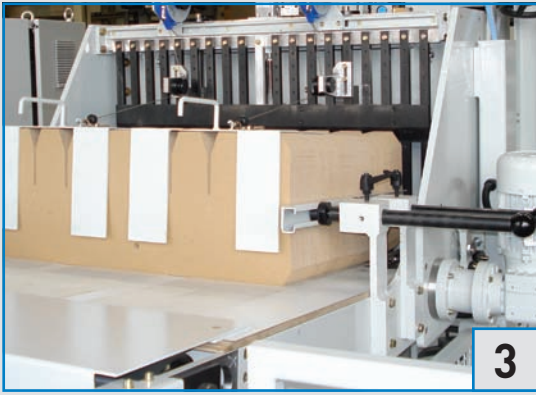
Easy to use loading system for both the longitudinal and transversal elements is very precise and fast, a supplementary device called ASF (Auto Sheet Feeder) eliminates interruptions of the production cycle due to manual positioning of the longitudinal elements, enhancing at the best the productivity of the assembly machine.

**ANDAX-JUMBO** is endowed with a PLC with touch screen interface for job settings. It enables the possibility of saving all parameters of the specific product to be recalled in case of a repetitive work, minimizing machine's set up time.

Production rates up to max. 8 - 12 sets/min with a pitch 1500 mm or to max. 16 - 24 sets/min with a pitch 750 mm (in both cases depending on partitions dimensions and cell's configuration)

Machine is delivered in standard configuration with nine longitudinal channels and the possibility of inserting up to twenty-four cross elements.

### CROSS ELEMENTS PROCESSING

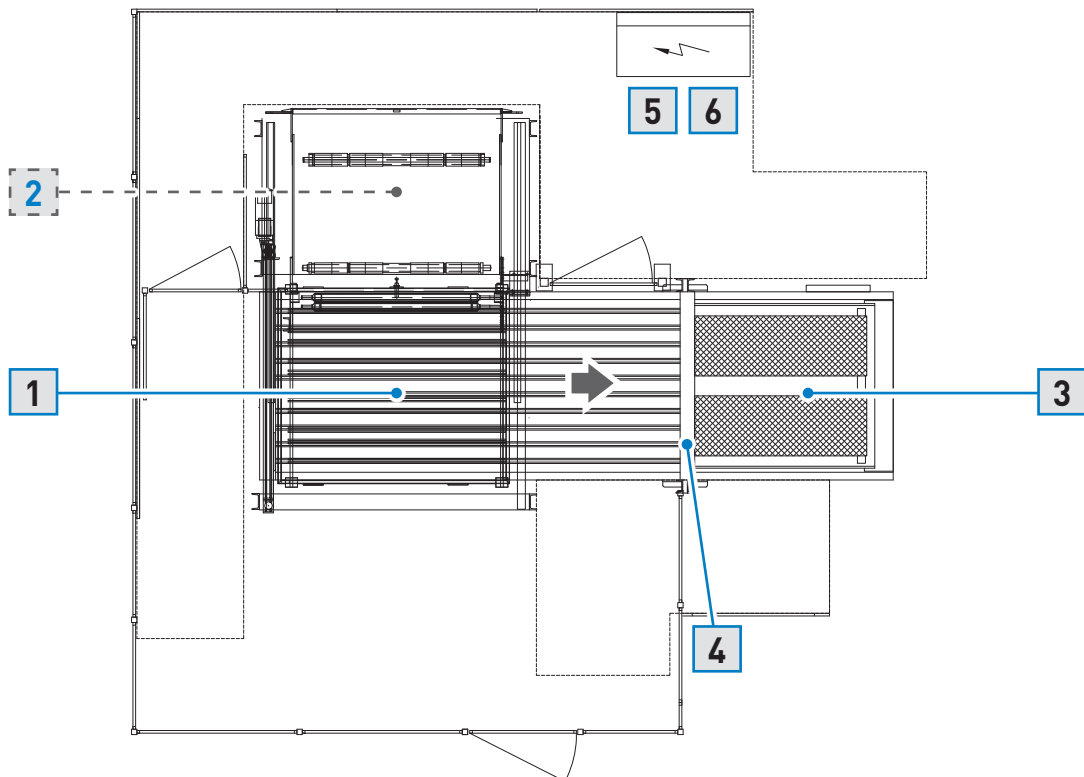


Cross dividers feeder is built on the top of interlocking area, towards the delivery side of the machine. Elements are kept upright by a pressure system and moved to injection area by means of belts.

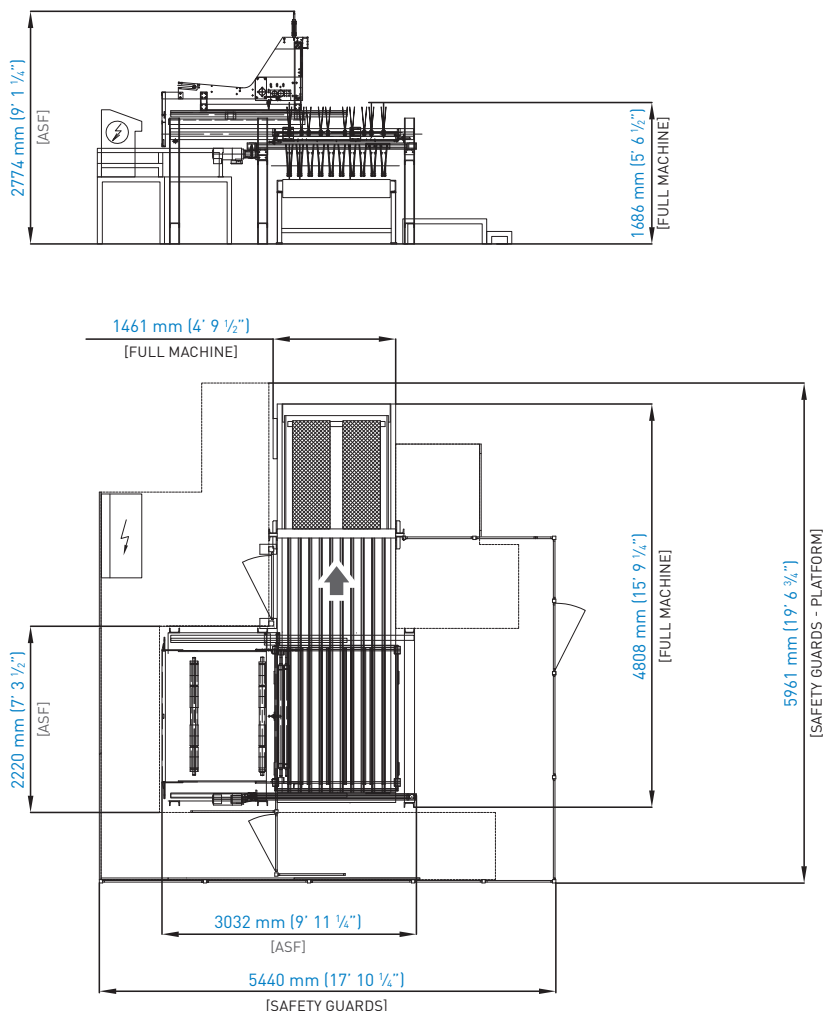
### LONGITUDINAL / CROSS ELEMENTS INTERLOCKING



Once longitudinal elements reach correct position, they are detected from a photocell which activates the short stroke piston that pushes cross elements through two high speed running rollers to ensure a precise penetration of cross elements through the longitudinal ones.



## ANDAX-JUMBO



■ total weight with optional units approx. 4300 kg (9.479 lb)

## TECHNICAL DETAILS

### SPEED

- with pitch 750 mm [29 17/32"]: 16 - 24 sets/minute
- with pitch 1500 mm [59 1/16"]: 8 - 12 sets/minute

### MAIN BELT SPEED

- min. 5.4 m/minute — max. 32.5 m/minute

### PRODUCTION

- from Micro to Double Flute (adaptable at the order to the requirements)

### CHANNELS PER LONGITUDINAL ELEMENTS

- standard version: 9
- on request: up to 17

### INJECTIONS PER TRANSVERSAL ELEMENTS

- standard version: 24

### LONGITUDINAL ELEMENTS LENGTH (A)

- min. 200 mm [7 5/64"] — max. 1400 mm [55 9/64"]

### TRASVERSAL ELEMENTS LENGTH (B)

- min. 200 mm [7 5/64"] — max. 1200 mm [47 16/64"]

### PARTITION'S HEIGHT (C)

- min. 65 mm [2 36/64"] — max. 420 mm [16 34/64"]

### CELL DIMENSION (D — E)

- (D) min. 40 mm [1 37/64"]
- (E) min. 60 mm [2 23/64"]

### ELECTRICAL REQUIREMENTS

- installed power: 6 kW
- electrical power supply: 3 × 400 V PE 50 Hz
- controls voltage: 24 V DC

### PNEUMATIC SYSTEM

- compressed air running pressure: 6 bar (600 000 Pa)

### OPTIONAL DEVICES AVAILABLE

- Automatic Sheet Feeder ASF-112

